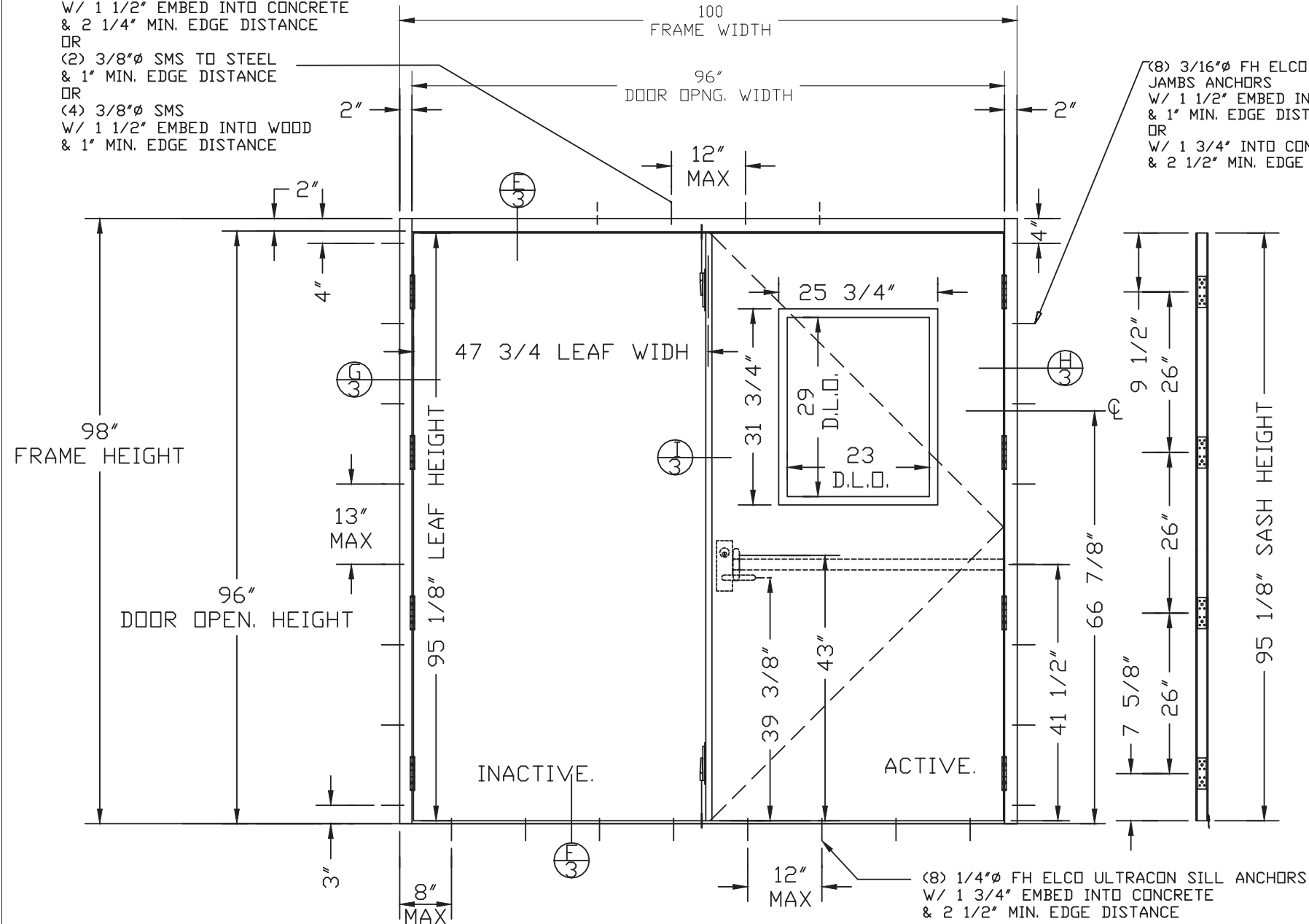


(2) 3/8"Ø DYNABOLT HEADER ANCHORS
W/ 1 1/2" EMBED INTO CONCRETE
& 2 1/4" MIN. EDGE DISTANCE
OR
(2) 3/8"Ø SMS TO STEEL
& 1" MIN. EDGE DISTANCE
OR
(4) 3/8"Ø SMS
W/ 1 1/2" EMBED INTO WOOD
& 1" MIN. EDGE DISTANCE

(8) 3/16"Ø FH ELCO ULTRACON
JAMBS ANCHORS
W/ 1 1/2" EMBED INTO WOOD
& 1" MIN. EDGE DISTANCE
OR
W/ 1 3/4" INTO CONCRETE/MASONRY
& 2 1/2" MIN. EDGE DISTANCE

DOORS ARE NOT RATED FOR IMPACT.
INSTALLATION OF THIS PRODUCT IN THE HVHZ AREA DOES REQUIRE
THE USE OF APPROVED SHUTTIERS OR EXTERNAL PROTECTION DEVICES
COMPLYING WITH HVHZ REQUIREMENTS.
INSTALLATION OF THIS SYSTEM OUTSIDE THE HVHZ AREA SHALL MEET
THE APPLICABLE REQUIREMENTS FOR WIND BORNE DEBRIS PROTECTION.



"TIOGA/SPARTAN" OUTSWING DOUBLE STEEL DOORS SYSTEM

APPROVAL APPLIES TO DOUBLE (XX) LEAF DOORS WITHOUT SIDELITES.

DOORS NOT APPROVED FOR INSTALLATIONS WHERE WATER INFILTRATION
RESISTANCE IS REQUIRED.

THIS PRODUCT HAS BEEN DESIGNED AND TESTED TO COMPLY WITH THE
REQUIREMENTS OF THE CURRENT EDITION FLORIDA BUILDING CODE INCLUDING HIGH VELOCITY
HURRICANE ZONE (HVHZ).

WOOD BUCKS BY OTHERS, MUST BE ANCHORED PROPERLY TO TRANSFER
LOADS TO THE STRUCTURE.

ANCHORS SHALL BE AS LISTED, SPACED AS SHOWN ON DETAILS, ANCHORS
EMBEDMENT TO BASE MATERIAL SHALL BE BEYOND WALL DRESSING OR STUCCO.

ANCHORING OR LOADING CONDITIONS NOT SHOWN IN THESE DETAILS ARE
NOT PART OF THIS APPROVAL.

A LOAD DURATION INCREASE IS USED IN DESIGN OF ANCHORS INTO WOOD ONLY.

ALL SHIMS TO BE HIGH IMPACT, NON-METALLIC AND NON-COMPRESSIBLE.

MATERIALS INCLUDING BUT NOT LIMITED TO STEEL/METAL SCREWS, THAT
COME INTO CONTACT WITH OTHER DISSIMILAR MATERIALS SHALL MEET THE
REQUIREMENTS OF THE CURRENT EDITION FLORIDA BUILDING CODE.

MANUFACTURER'S LABEL SHALL COMPLY WITH AND BE LOCATED ON A READILY VISIBLE LOCATION IN
ACCORDANCE WITH THE CURRENT EDITION FLORIDA BUILDING CODE.

NOTE:
EGRESS REQUIREMENTS TO BE REVIEWED BY AHJ,

- A- THIS PRODUCT EVALUATION DOCUMENT (P.E.D.) PREPARED BY THIS ENGINEER IS GENERIC AND DOES NOT PROVIDE INFORMATION FOR A SITE SPECIFIC PROJECT; i.e. WHERE THE SITE CONDITIONS DEVIATE FROM THE P.E.O.
- B- CONTRACTOR TO BE RESPONSIBLE FOR THE SELECTION, PURCHASE AND INSTALLATION OF THIS PRODUCT BASED ON THIS PRODUCT EVALUATION PROVIDED HE/SHE DOES NOT DEVIATE FROM THE CONDITIONS DETAILED ON THIS DOCUMENT.
- C- THIS PRODUCT EVALUATION DOCUMENT WILL BE CONSIDERED INVALID IF ALTERED BY ANY MEANS.
- D- SITE SPECIFIC PROJECTS SHALL BE PREPARED BY A FLORIDA LICENSED ENGINEER OR ARCHITECT WHICH WILL BECOME THE ENGINEER OF RECORD (E.O.R.) FOR THE PROJECT AND WHO WILL BE RESPONSIBLE FOR THE PROPER USE OF THE P.E.D. ENGINEER OF RECORD, ACTING AS A DELEGATED ENGINEER TO THE P.E.D. ENGINEER SHALL SUBMIT TO THIS LETTER THE SITE SPECIFIC DRAWINGS FOR REVIEW.
- E- THIS P.E.D. SHALL BEAR THE DATE AND ORIGINAL SEAL AND SIGNATURE OF THE PROFESSIONAL ENGINEER OF RECORD THAT PREPARED IT.

**"TIOGA/SPARTAN" OUTSWING DOUBLE STEEL DOORS (XX)
WITH OR WITHOUT VIEW WINDOW**

FRAME TO MASONRY BUILDING INSTALLATION DETAILS

PERFORMANCE RATING	
DESIGN PRESSURE RATING	IMPACT RATING
+/- 50 PSF	NONE
THIS SYSTEM WAS NOT TESTED FOR WATER INFILTRATION AND IS TO BE INSTALLED ONLY WHERE THE WATER REQUIREMENT IS NOT NEEDED INCLUDING BUT NOT LIMITED TO AREAS WITH OVERHANGS MEETING CURRENT EDITION FLORIDA BUILDING CODE REQUIREMENT OF OVERHANG LENGTH/OVERHANG HEIGHT ≥ 1.0.	

Robert J. Amoruso, P.E.
Florida P.E. No. 49752

PTC PRODUCT DESIGN GROUP, LLC
PO BOX 520775 | LONGWOOD, FLORIDA 32752
FBPE C.A. NO. 25935
Phone: 321.690.1788 | Email: info@ptc-corp.com

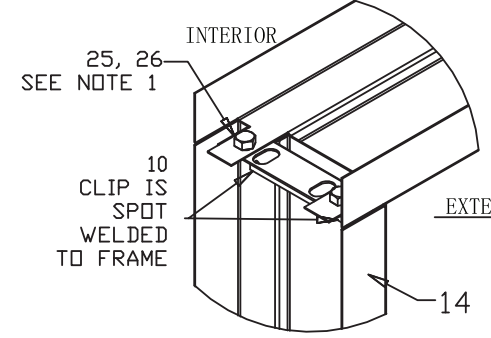
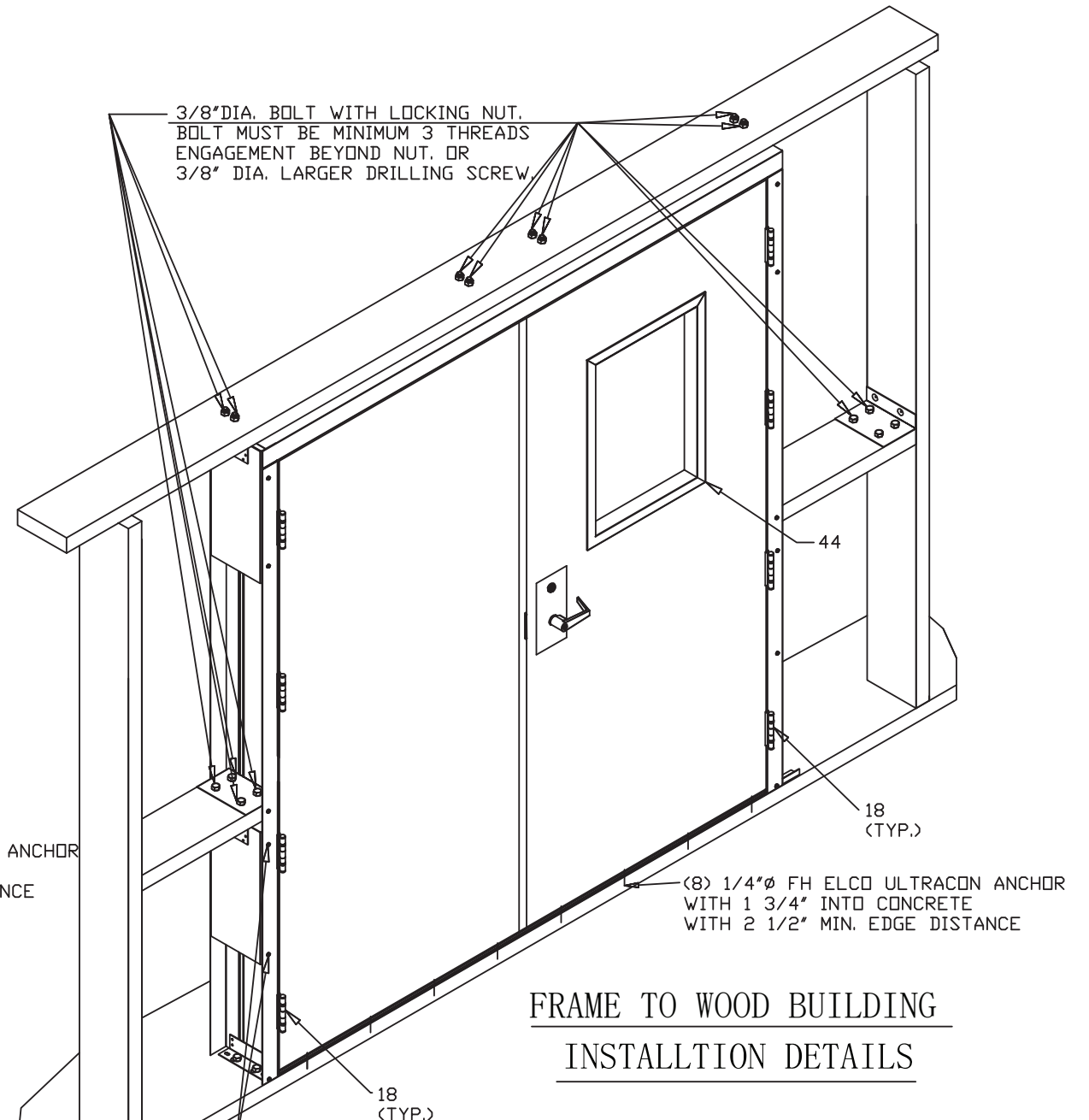
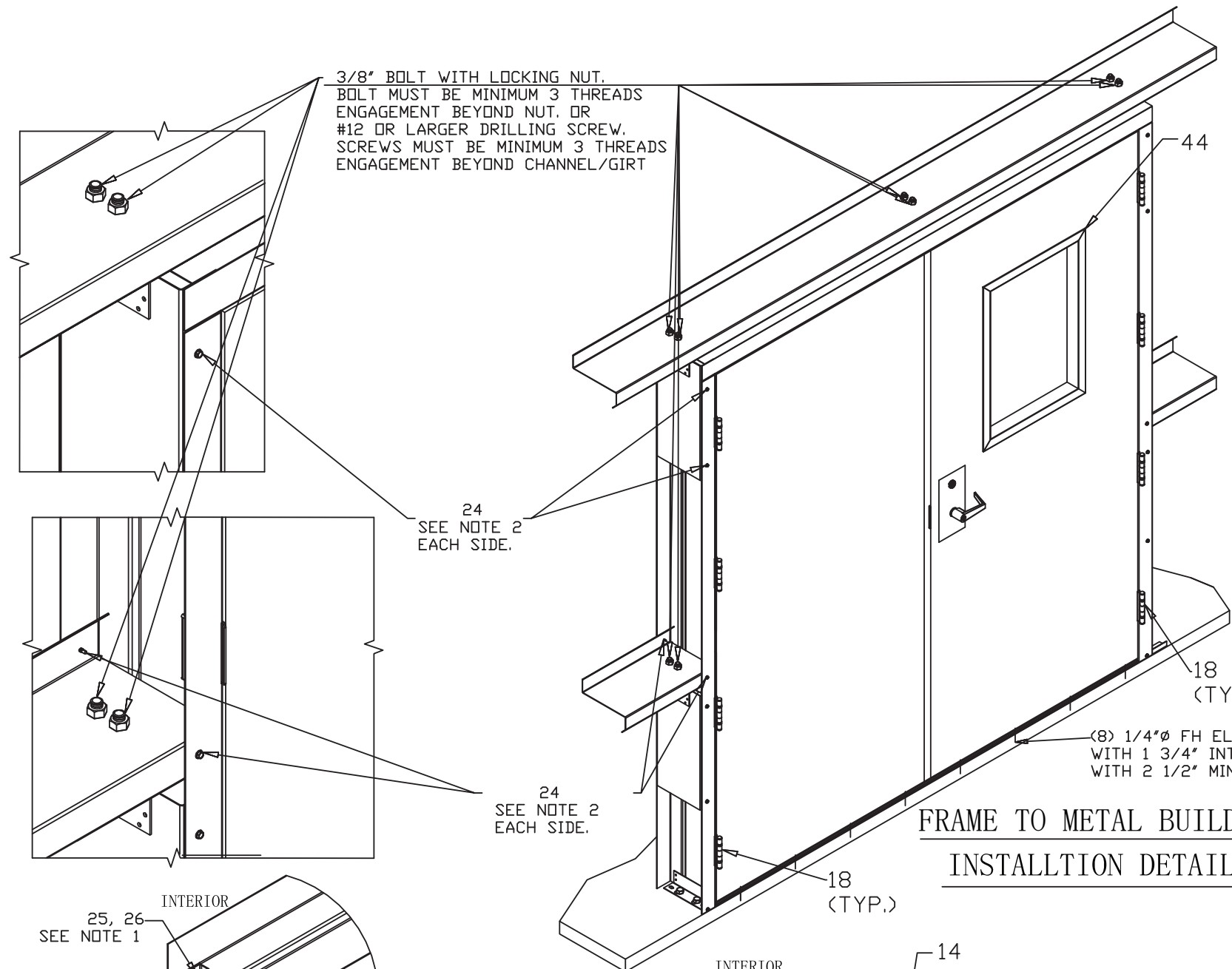
DRAFTER LG	DATE 8-3-15	TELL DOORS & WINDOWS, LLC. 6535 GUHN RD, STE 100, HOUSTON, TX 77040	
CHECKED	DATE	TITLE "TIOGA/SPARTAN" DS DOUBLE STEEL DOORS SYSTEM-N.I.	
ENGINEER	DATE	SIZE B	DWG NO 15-69
APPROVED R.J.A	DATE 10/17/23	RELEASE STATE	REV B ITER 2
THIRD ANGLE PROJECTION 		SCALE 1/2"=1'-0"	SHEET 1 OF 6

TELL MFG

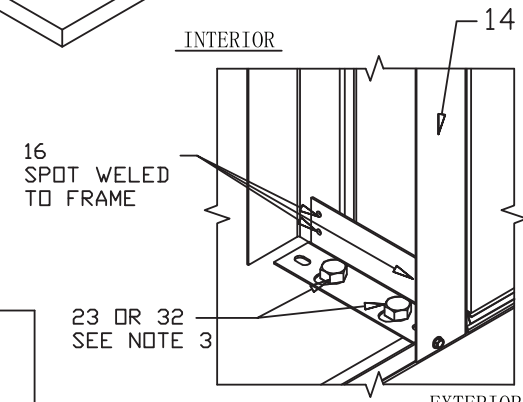
Spectrum Brands | Hardware & Home Improvement

TELL MANUFACTURING, INC.
18 RICHARD DRIVE, LITITZ, PA 17543

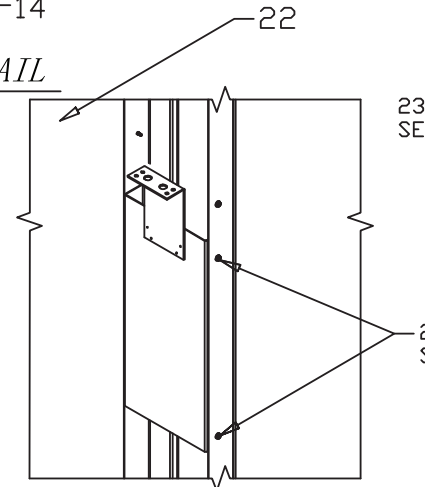
THIS DOCUMENT IS THE PROPERTY OF SPECTRUM BRANDS, INC. AND/OR ITS AFFILIATES. THE CONTENTS OF THIS DOCUMENT ARE CONFIDENTIAL AND CONSTITUTE TRADE SECRETS PROPRIETARY TO SPECTRUM BRANDS. NEITHER THIS DOCUMENT NOR ITS CONTENTS SHALL BE DISCLOSED TO ANY UNAUTHORIZED PERSON, COPIED, OR PUBLISHED WITHOUT SPECTRUM BRANDS' PRIOR WRITTEN CONSENT.



CORNER CONSTRUCTION DETAIL



FLOOR BASE ANGLE DETAIL



INTERIOR JAMB EXTENSION EXTERIOR ASSEMBLY DETAIL

FRAME TO METAL BUILDING
INSTALLTION DETAILS

FRAME TO WOOD BUILDING
INSTALLTION DETAILS

- NOTES:
- 1) FOR ANCHORING KNOCK DOWN FRAME HEAD JAMB TO FRAME HINGE JAMB AND FRAME STRIKE JAMB 16GA. (.053" MIN.) STEEL FRAMING USE (2 PER SIDE) 1/4" TO 1/2" DIAMETER STEEL BOLT WITH MATING SELF LOCKING NUT. BOLT TO BE OF SUFFICIENT LENGTH TO ACHIEVE 3-THREADS MINIMUM BEYOND NUT. LOCATED AND ANCHOR AS SHOWN IN CORNER CONSTRUCTION DETAIL.
 - 2) FOR ANCHORING JAMB EXTENSION ASSEMBLY TO 16GA. (.053" MIN.) STEEL FRAMING HINGE AND STRIKE JAMBS, USE (4 PER CHANNEL) #12 OR LARGER DRILLING SCREWS OF SUFFICIENT LENGTH TO ACHIEVE 3-THREADS MINIMUM BEYOND ANCHOR CHANNELS. LOCATE AND ANCHOR AS SHOWN IN JAMB EXTENSION ASSEMBLY DETAIL.
 - 3) FOR ANCHORING FLOOR BASE ANGLE OF FRAME HINGE AND STRIKE JAMBS ONTO CONCRETE USE (2 PER JAMB) 3/8" TO 1/2" DIAMETER WEDGE BOLTS OF SUFFICIENT LENGTH TO ACHIEVE 2" MINIMUM EMBEDMENT INTO CONCRETE WITH 4 1/2" MINIMUM EDGE DISTANCE OR (2 PER SIDE) 5/16" TO 1/2" DIAMETER HEX WASHER HEAD TAPCON SCREWS OF SUFFICIENT LENGTH TO ACHIEVE 1-3/4" MINIMUM EMBEDMENT INTO CONCRETE WITH 3-3/16" MINIMUM EDGE DISTANCE (ADD WASHER IF NEEDED). LOCATE AND ANCHOR AS SHOWN IN FLOOR BASE ANGLE DETAIL.
 - 4) FOR ANCHORING THRESHOLD ONTO CONCRETE USE 3/16" DIAMETER FLAT HEAD TAPCON SCREWS WITH SUFFICIENT LENGTH TO ACHIEVE A 1-3/4" MINIMUM EMBEDMENT INTO CONCRETE WITH 2-5/8" MINIMUM EDGE DISTANCE. LOCATE ANCHORS AS SHOWN IN ELEVATIONS AND INSTALLATION DETAILS.
 - 5) INSTALLATION ANCHORS AND HARDWARE SHALL BE INSTALLED IN ACCORDANCE WITH MANUFACTURER'S INSTALLATION INSTRUCTIONS AND SHALL NOT BE USED IN SUBSTRATES WITH STRENGTHS LESS THAN THE MINIMUM STRENGTH SPECIFIED BELOW:
 - A. STEEL FRAME: 16GA (.053" MIN)
 - B. CONCRETE: MINIMUM COMPRESSIVE STRENGTH 3192 PSI
 - 6) PRE-ASSEMBLED FRAME CONFIGURATION SHALL BE INSTALLED IN ACCORDANCE WITH MANUFACTURER'S INSTALLATION INSTRUCTION.

Robert J. Amoruso, P.E.
Florida P.E. No. 49752



PTC PRODUCT DESIGN GROUP, LLC
PO BOX 520775 | LONGWOOD, FLORIDA 32752
FBPE C.A. NO. 25935
Phone: 321.690.1788 | Email: info@ptc-corp.com

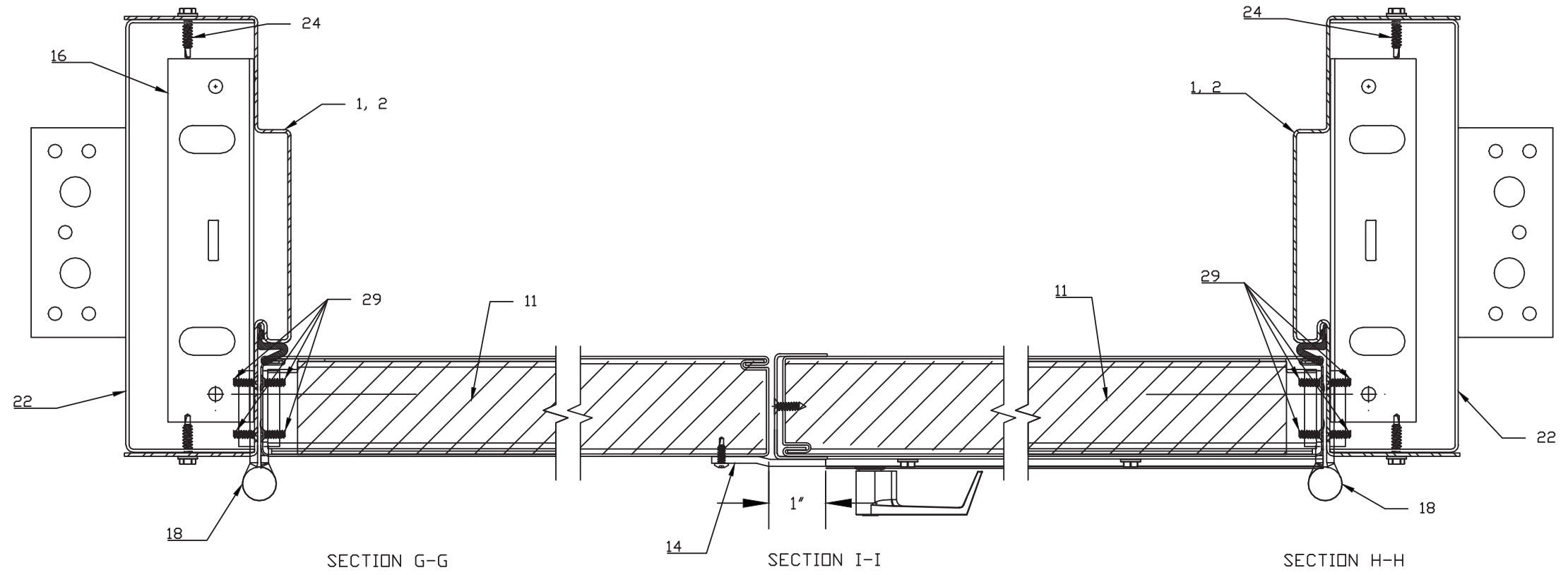
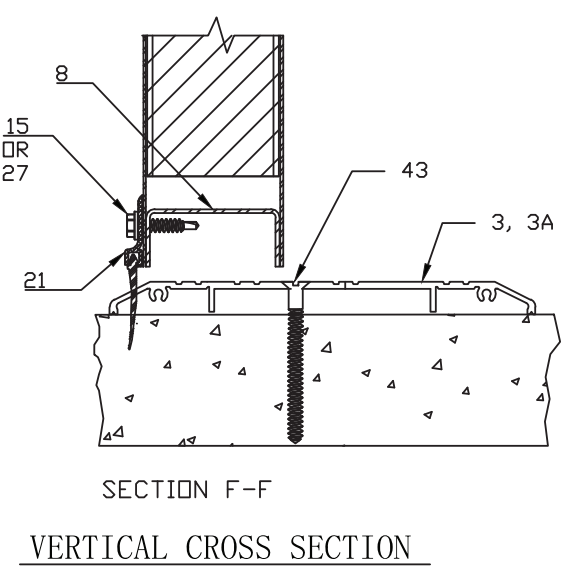
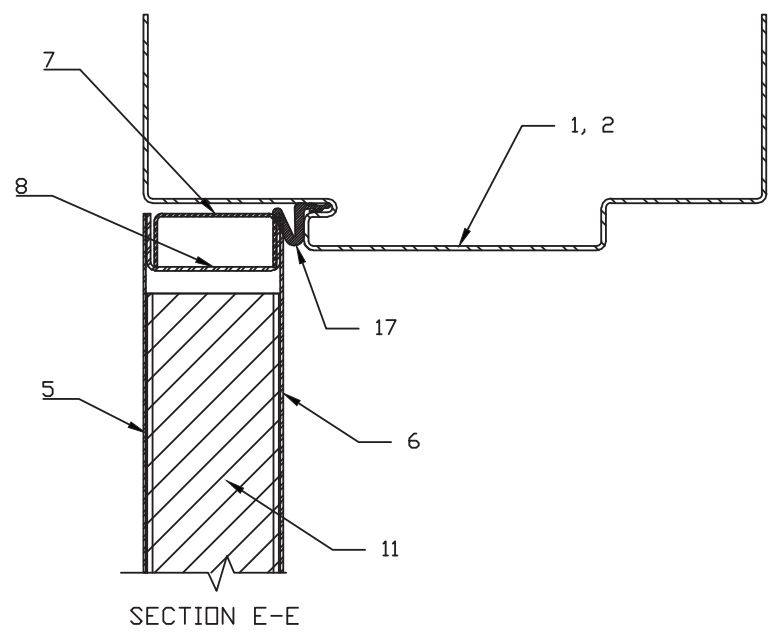
TELL MANUFACTURING, INC.
18 RICHARD DRIVE, LITITZ, PA 17543



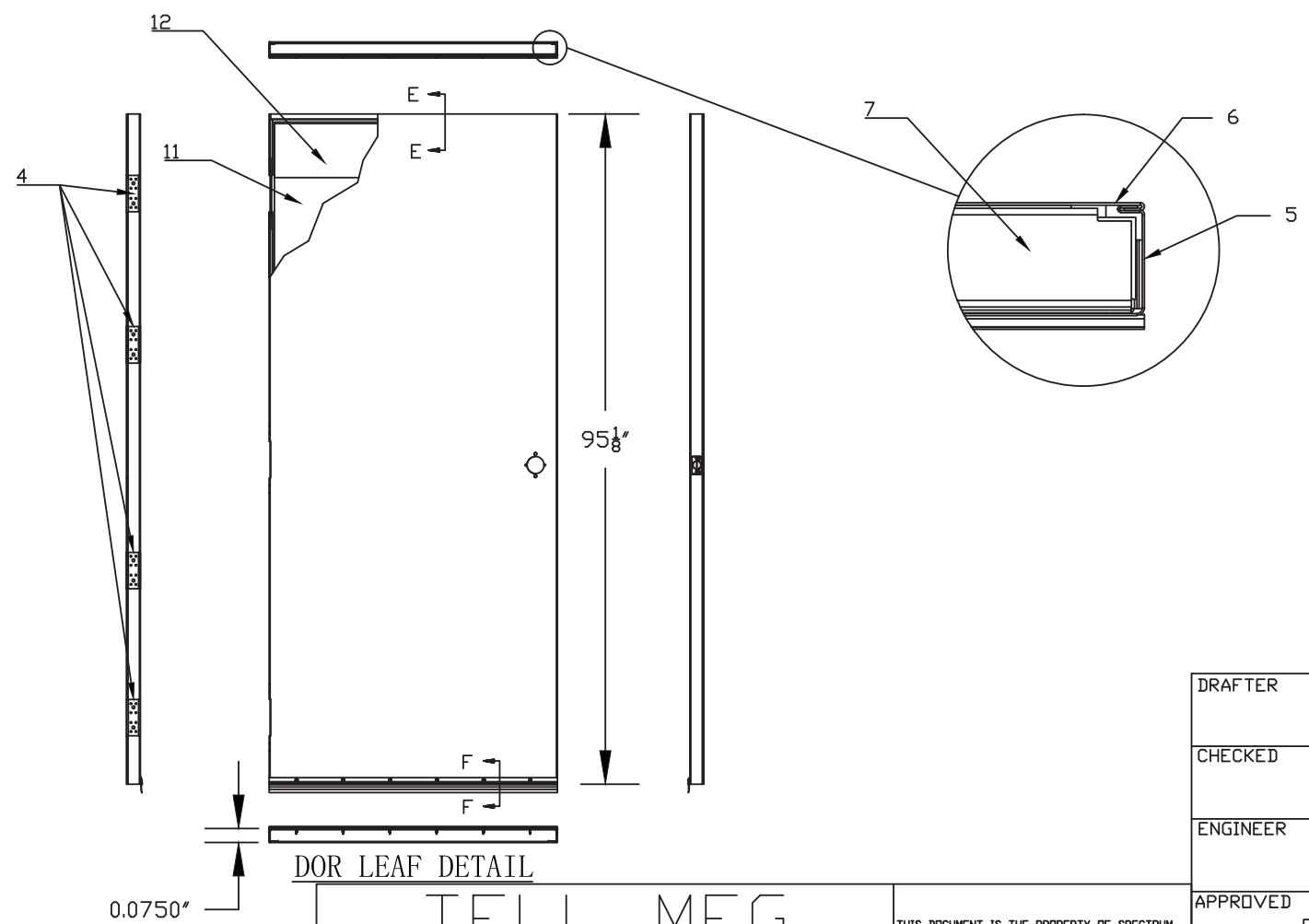
THIS DOCUMENT IS THE PROPERTY OF SPECTRUM BRANDS, INC AND/OR ITS AFFILIATES. THE CONTENTS OF THIS DOCUMENT ARE CONFIDENTIAL AND CONSTITUTE TRADE SECRETS PROPRIETARY TO SPECTRUM BRANDS. NEITHER THIS DOCUMENT NOR ITS CONTENTS SHALL BE DISCLOSED TO ANY UNAUTHORIZED PERSON, COPIED, OR PUBLISHED WITHOUT SPECTRUM BRANDS' PRIOR WRITTEN CONSENT.

DRAFTER	LG	DATE	8-3-15
CHECKED		DATE	
ENGINEER		DATE	
APPROVED	R.J.A	DATE	10/17/23
THIRD ANGLE PROJECTION			

TELL DOORS & WINDOWS, LLC. 6535 GUHN RD, STE 100, HOUSTON, TX 77040			
TITLE "TIOGA/SPARTAN" DS DOUBLE STEEL DOORS SYSTEM-N.I.			
SIZE	B	DWG NO	15-69
RELEASE STATE	FINAL		REV B 2
SCALE	1/2"=1'-0"		SHEET 2 OF 6



HORIZONTAL CROSS SECTION



0.0750"

Robert J. Amoruso, P.E.
Florida P.E. No. 49752

PTC PRODUCT DESIGN GROUP, LLC
PO BOX 520775 | LONGWOOD, FLORIDA 32752
FBPE C.A. NO. 25935
Phone: 321.690.1788 | Email: info@ptc-corp.com

TELL MANUFACTURING, INC.
18 RICHARD DRIVE, LITITZ, PA 17543

TELL MFG
Spectrum Brands | Hardware & Home Improvement

THIS DOCUMENT IS THE PROPERTY OF SPECTRUM BRANDS, INC AND/OR ITS AFFILIATES. THE CONTENTS OF THIS DOCUMENT ARE CONFIDENTIAL AND CONSTITUTE TRADE SECRETS PROPRIETARY TO SPECTRUM BRANDS. NEITHER THIS DOCUMENT NOR ITS CONTENTS SHALL BE DISCLOSED TO ANY UNAUTHORIZED PERSON, COPIED, OR PUBLISHED WITHOUT SPECTRUM BRANDS' PRIOR WRITTEN CONSENT.

DRAFTER LG	DATE 8-3-15
CHECKED	DATE
ENGINEER	DATE
APPROVED R.J.A	DATE 10/17/23
THIRD ANGLE PROJECTION 	

TELL DOORS & WINDOWS, LLC. 6535 GUHN RD, STE 100, HOUSTON, TX 77040	
TITLE "TIOGA/SPARTAN" DS DOUBLE STEEL DOORS SYSTEM-N.I.	
SIZE B	DWG NO 15-69
RELEASE STATE	FINAL
SCALE 1/2"=1'-0" &bhc_pn_note	SHEET 3 OF 6

REV B
ITER 2

BILL OF MATERIAL

ITEM NO.	PART NUMBER	DESCRIPTION	MATERIAL	QTY.
1	MSD72235	METAL BUILDING DOOR FRAME (4 1/4" & 5 3/4" WIDTH) 3.21" X 0.054" THK. 16GA (2) HINGE JAMBS & (1) HEAD JAMB PER ASSEMBLY.	GALVANNEAL STEEL	1
2	MSD72232	HEADER/JAMB FRAME 2.67" X 5.86" X 0.059" THK. 16GA	GALVANNEAL STEEL	1
3	DT101228	THRESHOLD 0.5" X 4.25" X 0.090" THK. X 96"	6063-T5 ALUMINUM	1
3A	DT101234	THRESHOLD 0.5" X 5.75" X 0.090" THK. X 96"	6063-T5 ALUMINUM	
4	MSD10027	HINGE REINFORCEMENT 1.25" X 10.00" X 0.180" THK	COLD ROLLED STEEL	8
5	MSD21808	BOTTOM DOOR SKIN 47 3/4" X 95 1/8" (16GA)	GALVANNEAL STEEL	1
6	MSD21808	TOP DOOR SKIN 47 3/4" X 95 1/8" (16GA)	GALVANNEAL STEEL	1
7	MMD10205	TOP CAP 0.70" X 1.54" X .038" THK	GALVANNEAL STEEL	1
8	MSD10223	DOOR CHANNEL 47.5" X 1.6" X .055" THK	GALVANNEAL STEEL	2
9	MSD10091	CYLINDRICAL LOCK REINFORCEMENT 1.65" X 6.69" X 3.80" X 0.54" THK. 16GA	COLD ROLLED STEEL	1
10	MSD70048	FRAME CLIP 5.54" X 1.45" X 1.43" X 0.097" THK 12GA SPOT WELDED TO JAMBS	GALVANNEAL STEEL	2
11	MSD10005	FOAM CORE 44.00" X 91.00" X 1.688" THK - 0.733 LB/FT DENSITY	POLYSTYRENE FOAM	1
12	MMD10347	DOOR CLOSER REINFORCEMENT 7.00 X 19.50" (16GA) STEEL SHEET	GALVANNEAL STEEL	2
13	MSD10068	MORTISE LOCK REINFORCEMENT 5.00" X 1.5" X 11.93" X 0.067" THK. 15GA	COLD ROLLED STEEL	1
14	MSD10564	ASTRAGAL 14GA 2.00" X 95.13" OVERLAP STRIP (BLADE), 16GA EDGE CHANNEL (STILE REINF.)	GALVANNEAL STEEL	1
15	-	#8 X 1" SELF DRILLING SCREWS (NOT SUPPLIED)	STEEL	6
16	-	HINGE FLOOR BASE ANGLE CLIP 12GA	GALVANNEAL STEEL	2
17	DT100631	WEATHER STRIP LP1153 (18')	-	1
18	HG100034	HINGE 4-1/2" X 4-1/2"	GALVANNEAL STEEL	8
19	-	ML1300 SERIES HEAVY DUTY COMMERCIAL GRADE 1 MORTISE LOCKSET	-	1
20	-	9100 SERIES MORTISE EXIT DEVICE WITH PANIC DOOR EXIT AND KEYED ESCUTCHEON TRIM	-	1
21	MMD10203	DOOR SWEEP 0.61" X 1.35" X 0.083" THK. TP 35.75"	6063-T6 ALUMINUM	1
22	MSD10259	JAMB EXTENSION ASSEMBLY 4.93" X 4.10" X 19.50" X 0.100" THK.	GALVANNEAL STEEL	4
22A	MSD10206	JAMB EXTENSION CHANNEL 2.37" X 4.05" X 16.00" X 0.054" THK.	GALVANNEAL STEEL	
22B	MSD10236	JAMB EXTENSION CLIP 1.68" X 4.93" X 10.25" X 0.100" THK.	GALVANNEAL STEEL	
23	-	3/8"Ø TO 1/2"Ø X 2-1/4" DYNABOLT STUD ANCHOR FOR CONCRETE	-	4
24	-	#12 X 1" SELF DRILLING SCREW (NOT SUPPLIED)	STEEL	24
25	-	1/4"Ø TO 1/2"Ø X 3/4" HEX BOLT	STEEL	12
26	-	1/4"Ø TO 1/2"Ø HEX NUT SELF LOCKING STEEL TO MATCH ITEM 25	STEEL	12
27	-	#10 X 1" SELF DRILLING SCREW (NOT SUPPLIED)	STEEL	6
28	-	STRIKE PLATE - TO MATCH HARDWARE OPTION AS SPECIFIED	-	1
29	-	#12 - 24 X 3/8" PHILLIPS FLAT HEAD COUNTERSUNK MACHINE SCREW STEEL, FOR HINGES	STEEL	32
30	-	3/16"Ø - 1-3/4" PHILLIPS FLAT HEAD COUNTERSUNK TAPCON CONCRETE SCREW (NOT SUPPLIED)	STEEL	5
31	DT101278	SURFACE BOLT	-	2
32	-	5/16"Ø TO 1/2"Ø X 1-3/4" HEX WASHER HEAD TAPCON CONCRETE SCREW (NOT SUPPLIED)	STEEL	4
33	MSD10061	HINGE REINFORCEMENT COVER 1.66" X 0.84" X 10.13" X 0.024" THK	COLD ROLLED STEEL	4
34	MSD10090	STRIKE PLATE REINFORCEMENT 1.38" X 6.50" X 1.13" X 0.059" THK. 16GA	COLD ROLLED STEEL	1
35	MSD10006 MSD10033	2 PART ADHESIVE, REZ-CURE EP882 BY INNOVATIVE RASIN SYSTEM, INC.	EPOXY RESIN	2
36	DT100852	ANCHOR 1.58" X 2.50" X 7.00" X 0.048" THK	COLD ROLLED STEEL	4
37	SD100081	ANCHOR 0.95" X 2.05" X 7.00" X 0.052" THK	COLD ROLLED STEEL	4
38	-	1/4" X 3/4" HEX HEAD MACHINE BOLTS (HH MB) AND LOCK NUTS THRU FRAME CLIPS	STEEL	2
39	-	#8 X 3 1/2" NAILS	STEEL	16
40	-	3/8 X 4" WOOD LAG BOLT	STEEL	2
41	MSD10322	1.50" X 10.00" X 0.099" THK. SURFACE BOLT KEEPER REINFORCEMENT	COLD ROLLED STEEL	4
42	MSD10347	INACTIVE LEAF REINFORCEMENT 7.00" X 19.50" X 0.069" THK.	GALVANNEAL STEEL	3
43	-	1/4"Ø X 2-1/4" PHILIPS FLAT HEAD ELCO TAPCON CONCRETE SCREW (NOT SUPPLIED)	STEEL	8
44	SD101546	25 3/4" X 31 3/4" WHITE IG INSULATED GLASS UNIT LITE KIT BY NATIONAL GUARD PRODUCTS	STEEL	1

1

HARDWARE SCHEDULE

FRAME	16 GA. (STEEL)
DOOR	16 GA. (STEEL)
REINFORCEMENT	16 GA 7.00" X 19.50" LONG GALVANNEALED STEEL CLOSER REINFORCEMENT
CORE	1 11/16" THK. EPS FOAM
HINGE	(8) 4 1/2" X 4 1/2" (4/PANEL STEEL SQUARE HINGES)
REINFORCEMENT	1.25" X 10" X 0.180" THK. (COLD ROLLED STEEL) HINGE REINFORCEMENT & 1.38" X 6.50" X 1.13" X 0.059" THK. STRIKE PLATE REINFORCEMENT
LOCK	9100 SERIES MORTISE EXIT DEVICE WITH PANIC DOOR EXIT AND KEYED ESCUTCHEON TRIM ML1300 SERIES HEAVY DUTY COMMERCIAL GRADE 1 MORTISE LOCKSET (2) 3/8" DIA. SURFACE BOLTS (INACTIVE LEAF) W/ (2) SUPPORTS @ 8" O.C. USING (2) # 12 SMS/SUPPORT
REINFORCEMENT	(2) 5.00" X 1.50" X 12.00" X 0.067" THK. (COLD ROLLED STEEL) MORTISE LOCK REINFORCEMENT. 1.50" X 10.00" X 0.099" THK. (12GA COLD ROLLED STEEL) SURFACE BOLT KEEPER REINFORCEMENT. 7.00" X 19.50" X 0.069" THK. (GALVANNEAL STEEL) INACTIVE LEAF REINFORCEMENT.
ASTRAGAL	ASTRAGAL 14GA 2.00" X 95.13" OVERLAP STRIP (BLADE), 16GA EDGE CHANNEL (STILE REINF. GALVANNEAL STEEL)
JAMB EXTENSION	ASSEMBLY 4.93" X 4.10" X 19.50" X 0.100" THK CHANNEL 2.37" X 4.05" X 16.00" X 0.054" THK. CLIP 1.68" X 4.93" X 10.25" X 0.100" THK
VIEW WINDOW	25 3/4" X 31 3/4" WHITE IG INSULATED GLASS UNIT LITE KIT BY NATIONAL GUARD PRODUCTS

Robert J. Amoruso, P.E.
Florida P.E. No. 49752



PTC PRODUCT DESIGN GROUP, LLC
PO BOX 520775 | LONGWOOD, FLORIDA 32752
FBPE C.A. NO. 25935
Phone: 321.690.1788 | Email: info@ptc-corp.com

TELL MANUFACTURING, INC.
18 RICHARD DRIVE, LITITZ, PA 17543

TELL MFG
Spectrum Brands | Hardware & Home Improvement

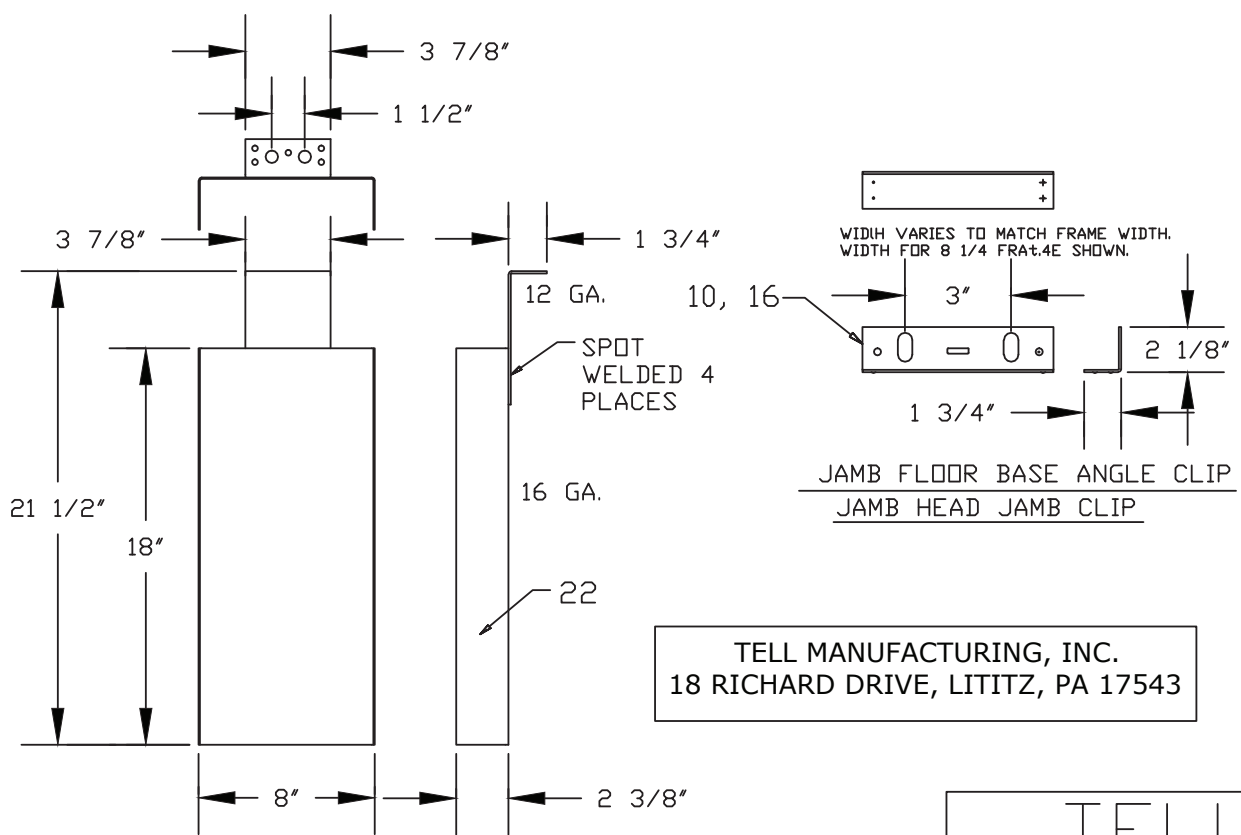
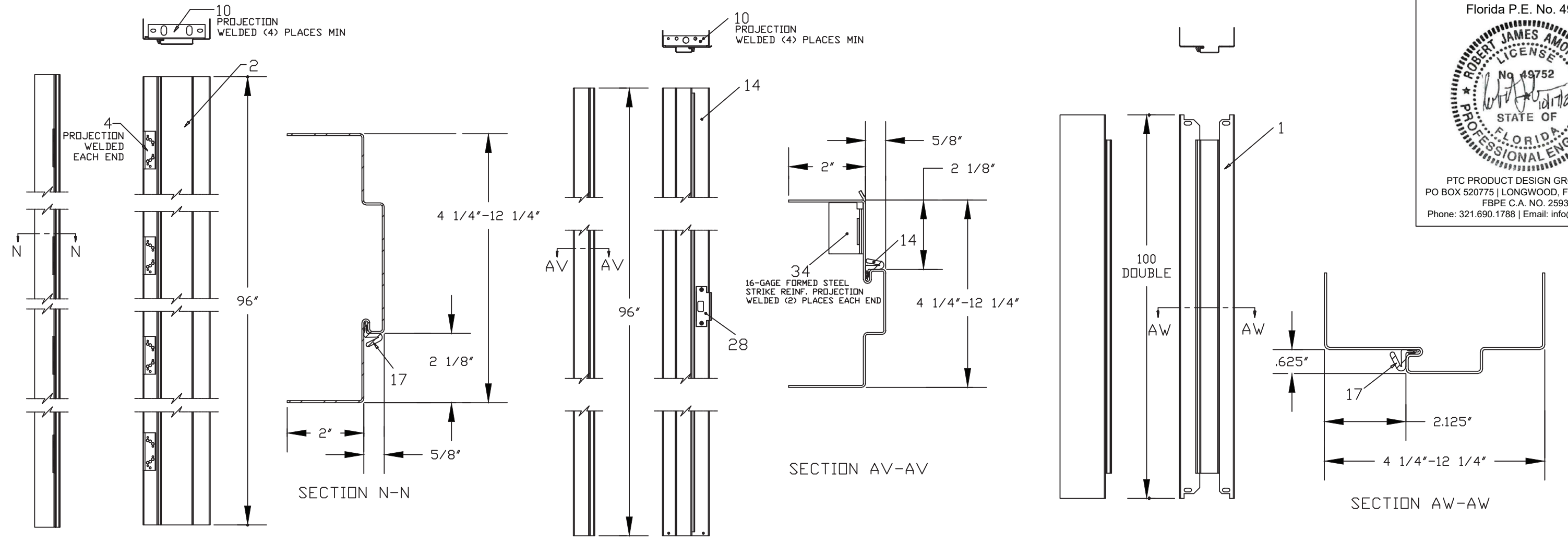
THIS DOCUMENT IS THE PROPERTY OF SPECTRUM BRANDS, INC. AND/OR ITS AFFILIATES. THE CONTENTS OF THIS DOCUMENT ARE CONFIDENTIAL AND CONSTITUTE TRADE SECRETS PROPRIETARY TO SPECTRUM BRANDS. NEITHER THIS DOCUMENT NOR ITS CONTENTS SHALL BE DISCLOSED TO ANY UNAUTHORIZED PERSON, COPIED, OR PUBLISHED WITHOUT SPECTRUM BRANDS' PRIOR WRITTEN CONSENT.

DRAFTER	LG	DATE	8-3-15	TELL DOORS & WINDOWS, LLC. 6535 GUHN RD, STE 100, HOUSTON, TX 77040	
CHECKED		DATE		TITLE "TIOGA/SPARTAN" DS DOUBLE STEEL DOORS SYSTEM-N.I.	
ENGINEER		DATE		SIZE	DWG NO
APPROVED	R.J.A	DATE	10/17/23	B	15-69
THIRD ANGLE PROJECTION				RELEASE STATE	REV ITER
				FINAL	B
				SCALE 1/2"=1'-0"	SHEET 4 OF 6

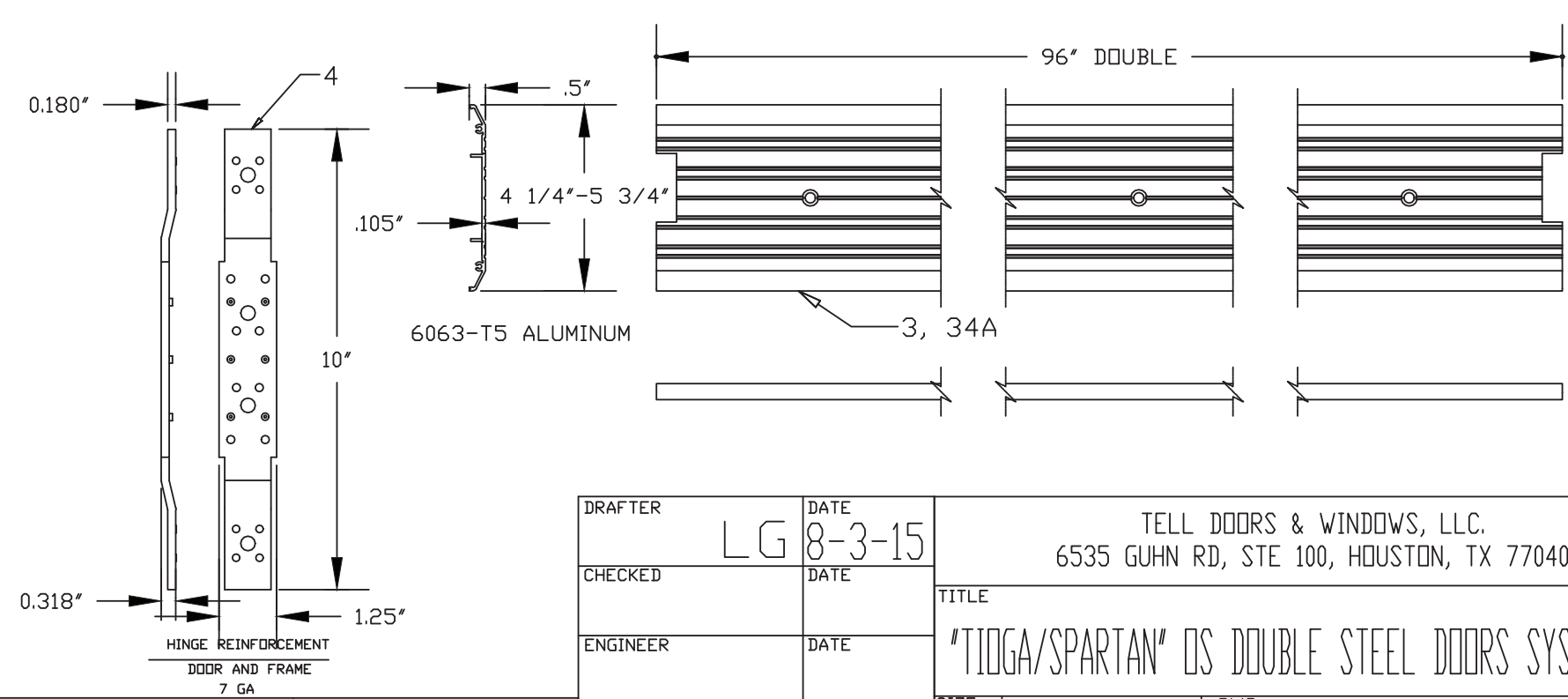
Robert J. Amoruso, P.E.
Florida P.E. No. 49752



PTC PRODUCT DESIGN GROUP, LLC
PO BOX 520775 | LONGWOOD, FLORIDA 32752
FBPE C.A. NO. 25935
Phone: 321.690.1788 | Email: info@ptc-corp.com



TELL MANUFACTURING, INC.
18 RICHARD DRIVE, LITITZ, PA 17543



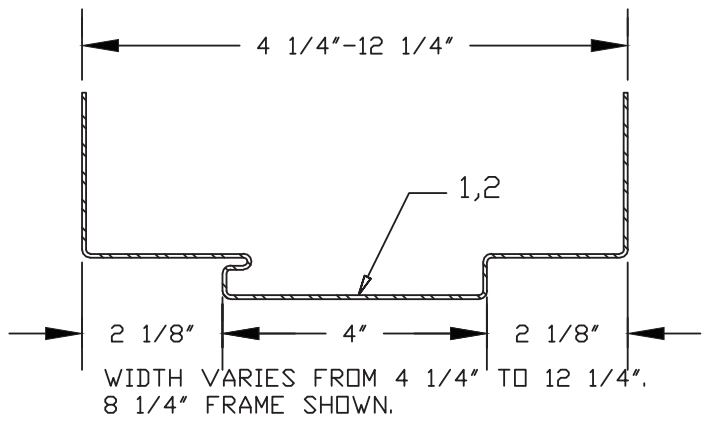
WIDTH VARIES TO MATCH FRAME WIDTH.
WIDTH FOR 8 1/4 FRAME SHOWN.

JAMB EXTENSION ASSEMBLY

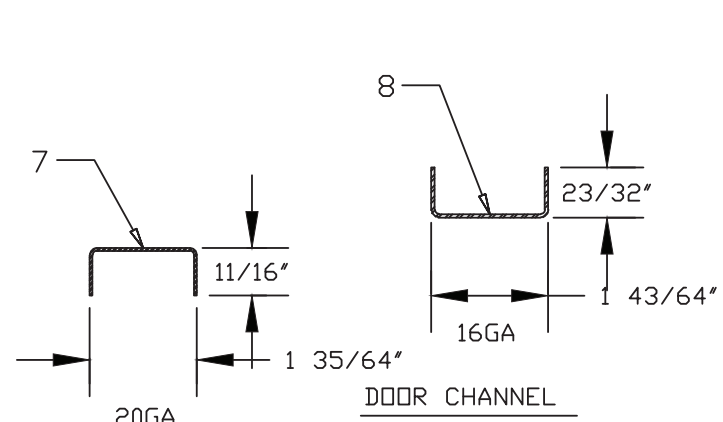


THIS DOCUMENT IS THE PROPERTY OF SPECTRUM BRANDS, INC AND/OR ITS AFFILIATES. THE CONTENTS OF THIS DOCUMENT ARE CONFIDENTIAL AND CONSTITUTE TRADE SECRETS PROPRIETARY TO SPECTRUM BRANDS. NEITHER THIS DOCUMENT NOR ITS CONTENTS SHALL BE DISCLOSED TO ANY UNAUTHORIZED PERSON, COPIED, OR PUBLISHED WITHOUT SPECTRUM BRANDS' PRIOR WRITTEN CONSENT.

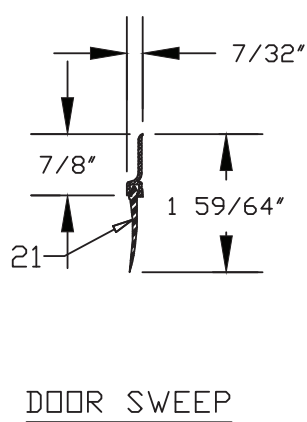
DRAFTER LG	DATE 8-3-15	TELL DOORS & WINDOWS, LLC. 6535 GUHN RD, STE 100, HOUSTON, TX 77040	
CHECKED	DATE	TITLE "TIOGA/SPARTAN" OS DOUBLE STEEL DOORS SYSTEM-N.I.	
ENGINEER	DATE	SIZE B	DWG NO 15-69
APPROVED R.J.A	DATE 10/17/23	RELEASE STATE FINAL	REV B
THIRD ANGLE PROJECTION 		SCALE 1/2"=1'-0"	SHEET 5 OF 6



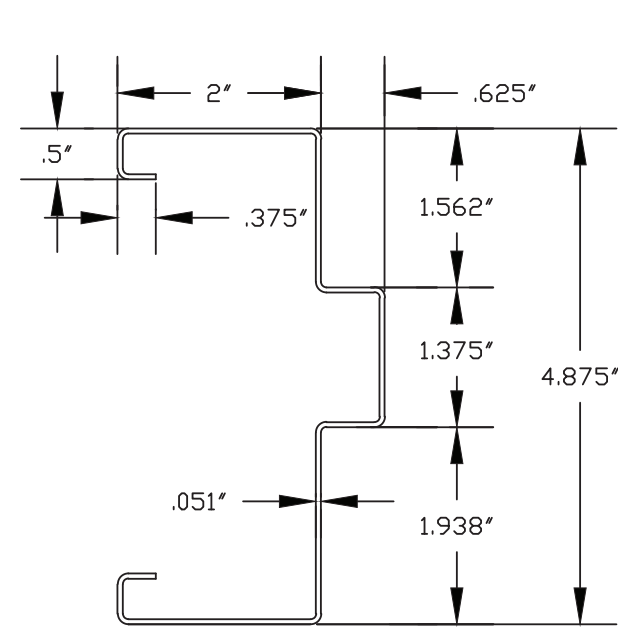
METAL BUILDING DOOR FRAME PROFILE



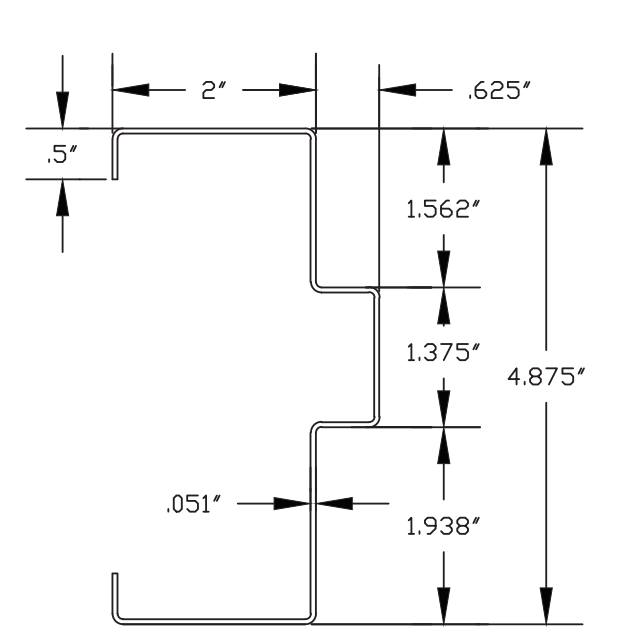
TOP CAP



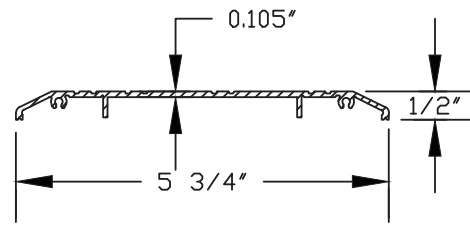
DOOR CHANNEL



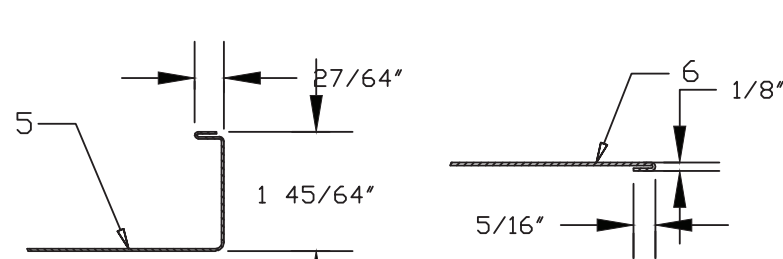
DOOR SWEEP



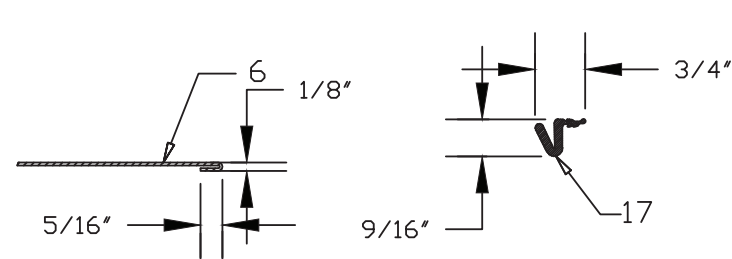
DOOR SWEEP



THRESHOLD (0.105" THICKNESS)
6063-T5 ALUMINUM

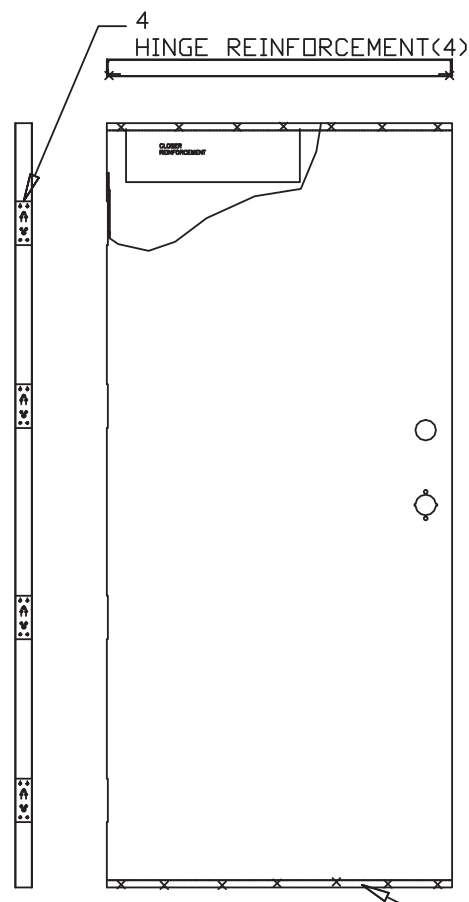


BOTTOM DOOR SKIN
18GA

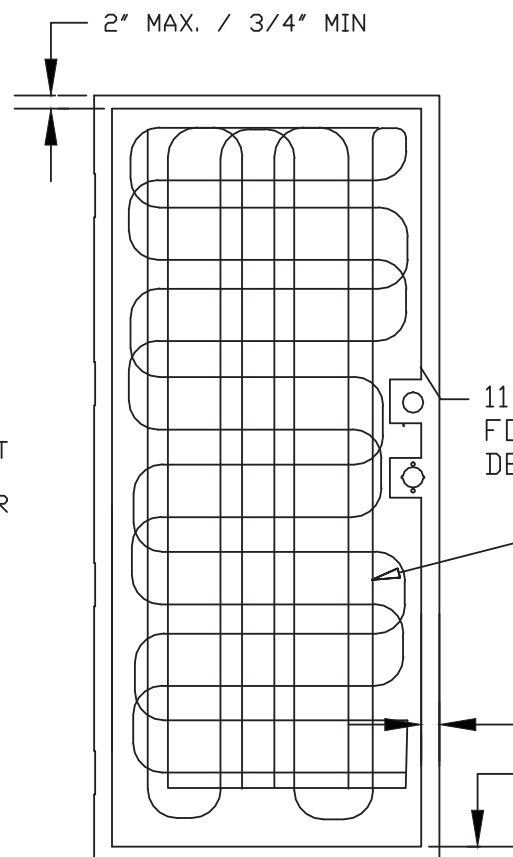


TOP DOOR SKIN
18GA

JAMB WEATHERSTRIPPING



DOOR LEAF ASSEMBLY



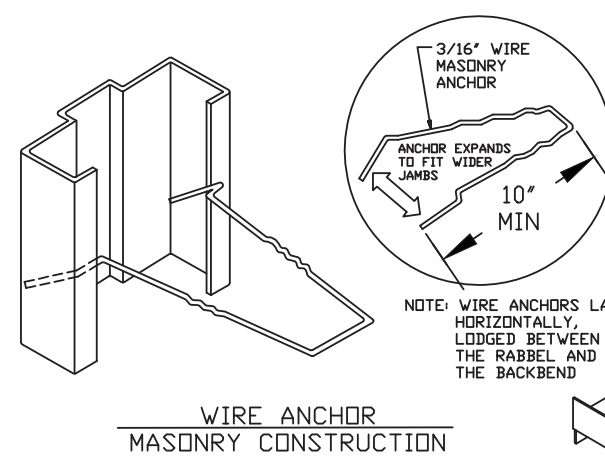
FOAM CORE.
DENSITY: 0.733 LB/FT³

ADHESIVE APPLIED IN CROSSED PATTERN PRIOR TO SPREADING.
- REZ CURE EP882 PART A & B APPLY PER UL SPEC.

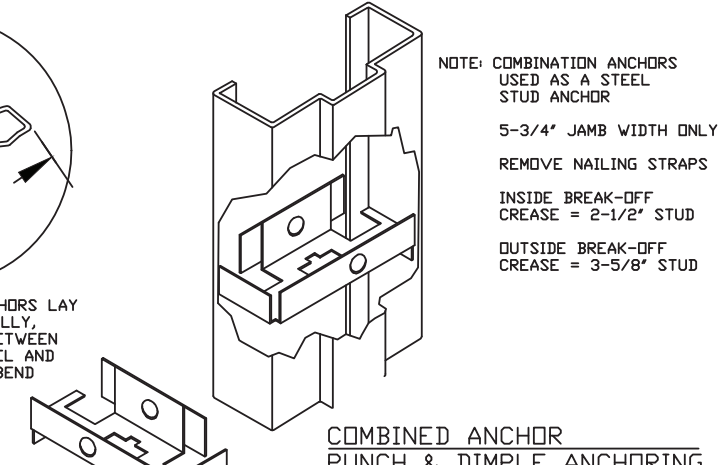
2-1/2" MAX. / 1-1/4" MIN. BOTH SIDES
MAX. 2"/MIN. 3/4"

Robert J. Amoruso, P.E.
Florida P.E. No. 49752

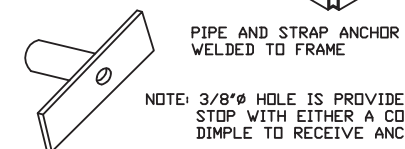
PTC PRODUCT DESIGN GROUP, LLC
PO BOX 520775 | LONGWOOD, FLORIDA 32752
FBPE C.A. NO. 25935
Phone: 321.690.1788 | Email: info@ptc-corp.com



WIRE ANCHOR
MASONRY CONSTRUCTION



COMBINED ANCHOR
PUNCH & DIMPLE ANCHORING



PIPE AND STRAP ANCHOR
WELDED TO FRAME

PIPE AND STRAP ANCHOR
EXISTING MASONRY CONSTRUCTION

DRAFTER	LG	DATE	8-3-15
CHECKED		DATE	
ENGINEER		DATE	
APPROVED	R.J.A	DATE	10/17/23
THIRD ANGLE PROJECTION			

TELL DOORS & WINDOWS, LLC. 6535 GUHN RD, STE 100, HOUSTON, TX 77040	
TITLE "TIOGA/SPARTAN" OS DOUBLE STEEL DOORS SYSTEM-N.I.	
SIZE B	DWG NO 15-69
RELEASE STATE	FINAL
SCALE 1/2"=1'-0"	SHEET 6 OF 6

TELL MANUFACTURING, INC.
18 RICHARD DRIVE, LITITZ, PA 17543

Spectrum Brands | Hardware & Home Improvement

THIS DOCUMENT IS THE PROPERTY OF SPECTRUM BRANDS, INC AND/OR ITS AFFILIATES. THE CONTENTS OF THIS DOCUMENT ARE CONFIDENTIAL AND CONSTITUTE TRADE SECRETS PROPRIETARY TO SPECTRUM BRANDS. NEITHER THIS DOCUMENT NOR ITS CONTENTS SHALL BE DISCLOSED TO ANY UNAUTHORIZED PERSON, COPIED, OR PUBLISHED WITHOUT SPECTRUM BRANDS' PRIOR WRITTEN CONSENT.